



# Tohoku Fukushi University

The University of Societal Innovation  
Learning – Practicing – Verifying Cycle



Learning – Practicing – Verifying Cycle

# Tohoku Fukushi University

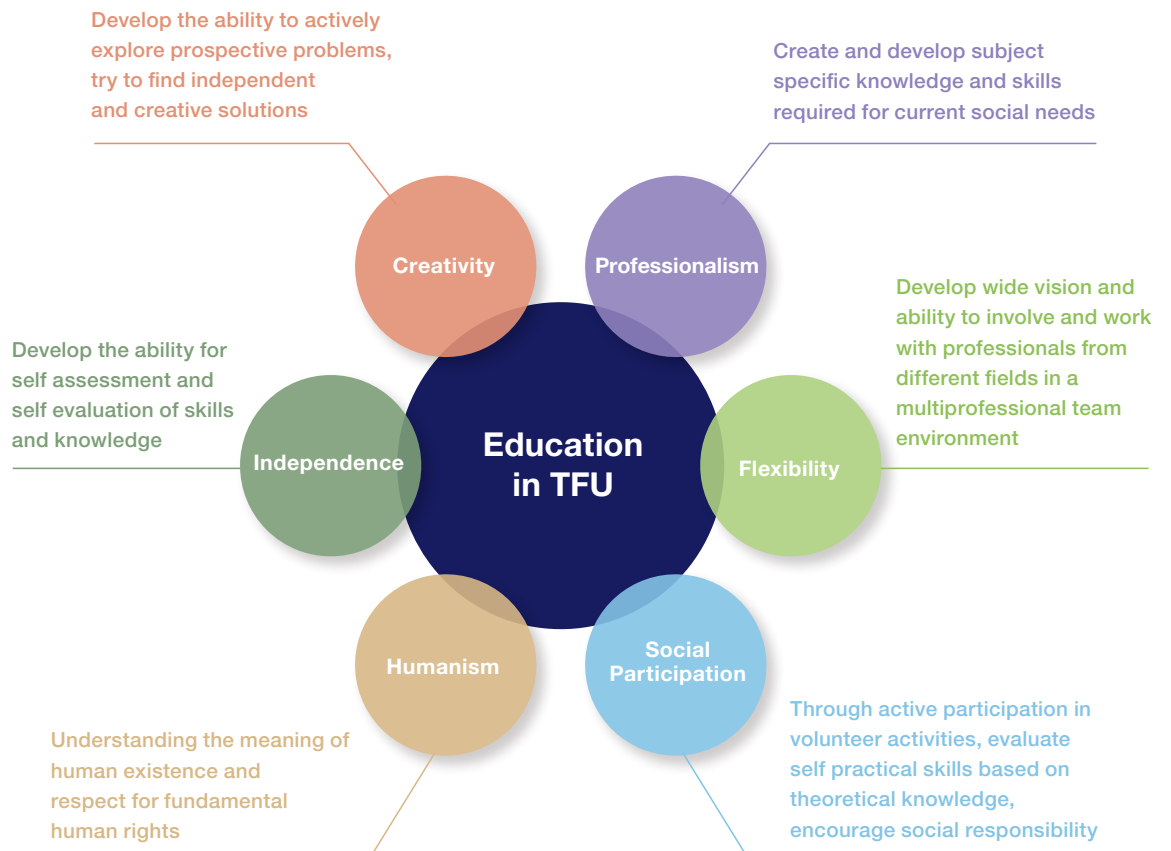
## The University of Societal Innovation

Let us Design the “You of Tomorrow”

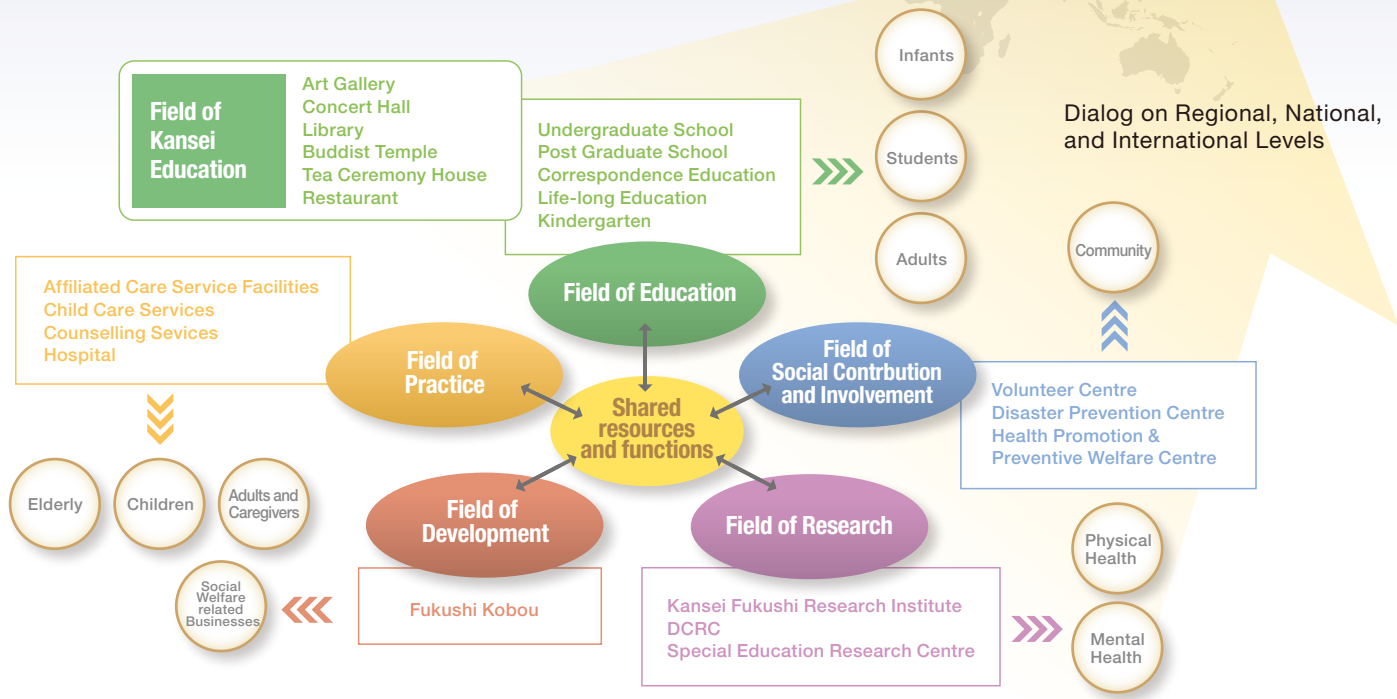
### Study in a diverse system

The very base of Tohoku Fukushi University’s education philosophy is that every single creature has its own identified value and exists with meaningful and mutual links in the state of nature. Therefore, true wisdom means to understand the state of nature and the values of each individual creature. This is done through practice with observation, to interpret with senses the meaning of the human life process (i.e. receiving life, aging, being in illness, and death and dying) and to innovate the existing stressful social cultural environment to better the wellness of human beings. Accumulating knowledge and building theories, skills and experience should be enhanced. That is why welfare is interesting. We consider welfare from all angles and provide the opportunity to study in a diverse system.

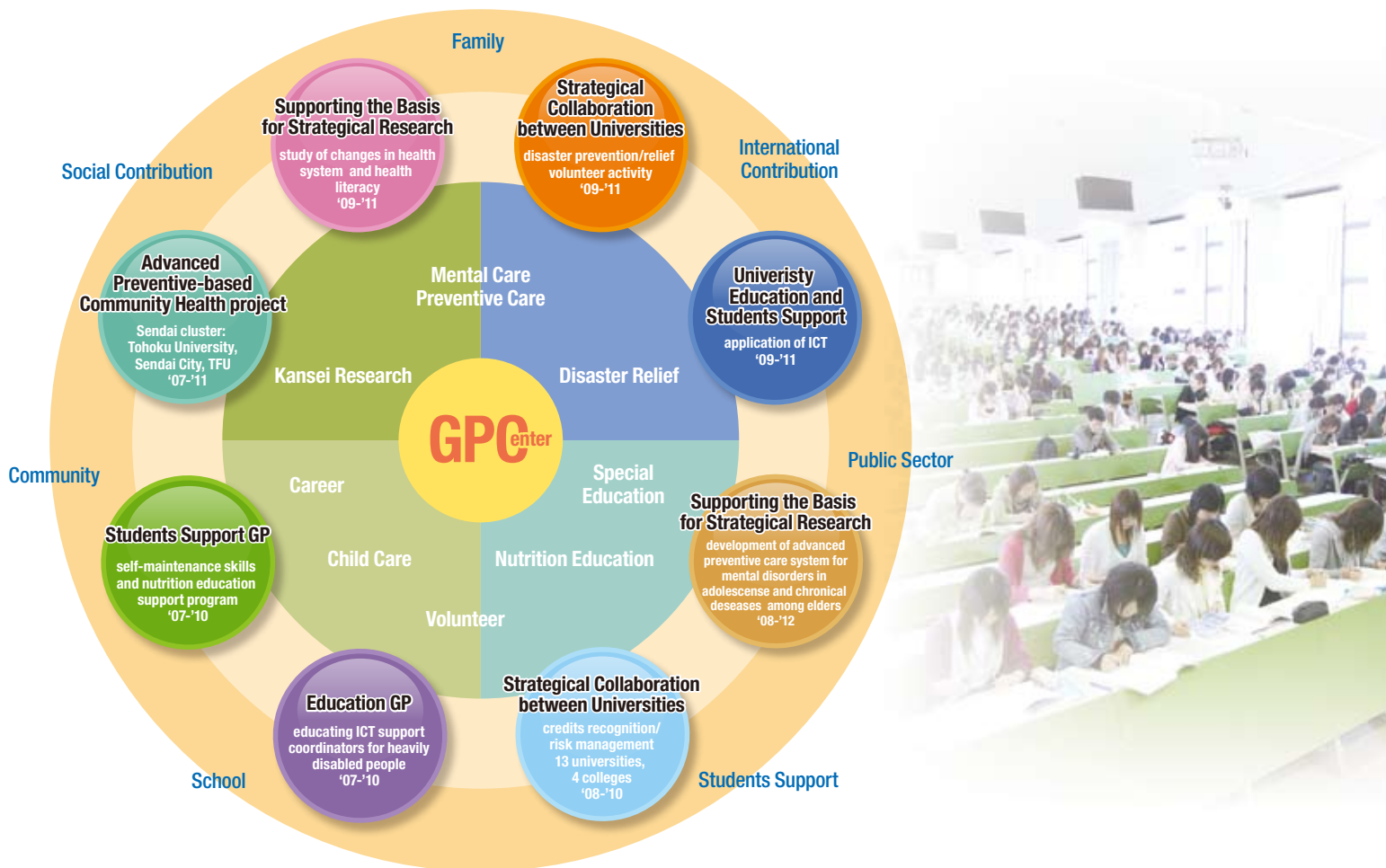
Built on the above philosophy and culture, the educational strategy regulating the whole educational process, R&D activities, and social relations of our university is “Learning by Practicing, Practicing is Verifying”. Our vision of higher education enhances Creativity, Professionalism, Flexibility, Social Participation, Humanism, and Independence.



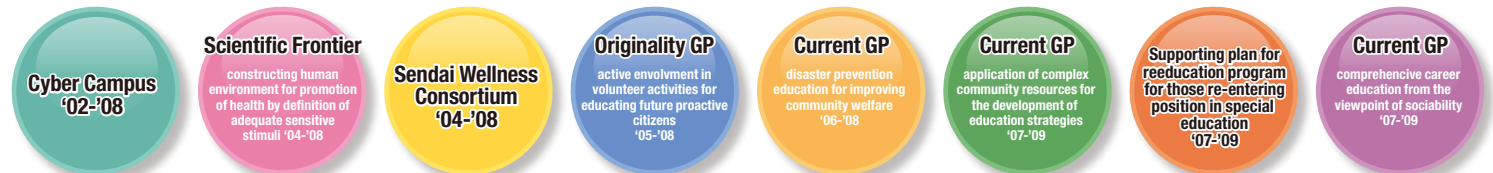
# TFU strategic vision and initiatives



## Good Practice (GP) awards granted to TFU by Ministry of Education and Science



## GP awards recieved by the University until 2009





## ■ Comprehensive Social Welfare Faculty

### **Department of Social Welfare**

*Social Welfare Course*  
*Comprehensive Welfare Course*

### **Department of Social Education**

*Social Education Course*  
*School Education Course*

### **Department of Welfare Psychology**

*Development Psychology Course*  
*Environment/Social Psychology Course*  
*Clinical Psychology Course*

### **Sub-majors**

*Kansei Design*  
*Welfare Tourism*  
*Sport Management*  
*Clinical Art*  
*Activities for Social Contribution*



## ■ Comprehensive Management Faculty

*Department of Industrial Welfare Management*  
*Department of Information Science for Welfare Services Management*

## ■ Child Science Faculty

*Department of Child Education*



## ■ Health Science Faculty

*Department of Nursing*  
*Department of Rehabilitation*  
*Major in OT*  
*Major in Physiotherapy*  
*Department of Medical Management*

## ■ Correspondence Education Faculty

*BA in Social Welfare, Welfare Psychology*  
*MA in Social Welfare, Welfare Psychology*

## ■ Buddhist Priest Education Course

## ■ Post Graduate School of Comprehensive Welfare Studies

### **MA in Social Welfare**

*Social Welfare studies course*  
*Juvenile Welfare studies course*

### **MA in Welfare Psychology**

*Welfare Psychology field*  
*Clinical Psychology field*

### **PhD in Social Welfare**



## ■ Institutions and Centres

*The University Library*  
*Serizawa Art Gallery*  
*Buddhist Social Welfare Research Institute*  
*Kansei Fukushi Research Institute*  
*Dementia Care Research and Training Centre*  
*Research Centre for Special Education*  
*Centre for Life-Long Education*  
*Disaster Prevention Centre*  
*Clinical Psychology Counselling Office*  
*The University Hospital*  
*Keyaki Concert Hall*  
*Health Promotion & Preventive Welfare Centre*  
*Centre for International Academic Exchange*  
*Volunteer Centre*  
*Welcom.21*  
*Social Welfare Counselling Office*  
*Centre for Family Support*



## ■ Affiliated Care Service Facilities

*Sendan no Mori*  
*Sendan no Mori Monou*  
*Sendan no Yakata*  
*Sendan no Sato*  
*Sendan no Oka*  
*Sendan no Ie*  
*Sendan no Mori Children Day Care Centre*  
*Fukuju Kindergarten*  
*Preventive Welfare Clinic*



The image provided by the Miyagi Prefecture Sightseeing Section.

# Welcome to Sendai The City of Trees



## Your future begins in this city - the City of Sendai

Promoting itself as a major political and industrial force in north-eastern Japan, Sendai City, with a population of over one million, is also recognized as a city filled with a warm, embracing atmosphere.

Endowed with natural beauty, such as zelkova-studded boulevards and the serene streams of the Hirose River, Sendai is known as the “City of Trees” where the classic tradition of a feudal stronghold has been in harmony with contemporary urban development.

The city is now making strides toward an ideal city in the 21st century as the capital of Miyagi Prefecture, which leads the country with numerous welfare projects.

Founded by the feudal lord, Masamune Date over four hundred years ago, Sendai is known as an academic center, playing a significant role in educational and cultural activities in Japan. It has a superb educational environment and a stimulating scholarly atmosphere.

With all the advantages and high potential this city offers, Tohoku Fukushi University has a new mission in this new century as a more comprehensive institution of higher learning. We cordially invite you to join us, together, in our exploration of the vast reaches of welfare studies in this city and on this campus.



## Tohoku Fukushi University

1-8-1 Kunimi, Aoba-ku  
Sendai, Japan 981-8522

TEL +81(0)22 301-1296  
FAX +81(0)22 301-1246  
kokusai@tfu-mail.tfu.ac.jp  
<http://www.tfu.ac.jp>